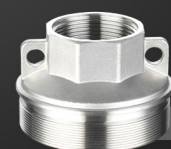
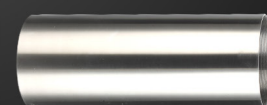


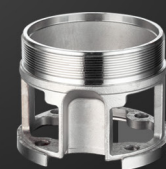
All stainless steel 304 Ensure water safety



Stainless steel
304 delivery chamber



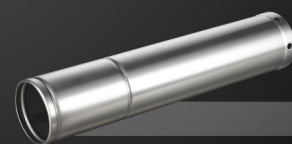
Stainless steel
304 sleeve



Stainless steel
304 inlet joint



Stainless steel
304 oil chamber



Stainless steel
304 casing



Immediately join the Shimge Family by scanning:
<https://www.shimgepump.com>

SHIMGE PUMP INDUSTRY (ZHEJIANG) CO., LTD.

Add: Dayangcheng Industrial Zone, Daxi Town, Wenling City, Zhejiang Province, China
Tel: +86-576-86339960
Fax: +86-576-86337079
Email: admin@shimge.com

SHIMGE®
-----for better life

New Product Launch

Small Size with Big Power

Fast and Easy to Install A New Option



Permanent Magnet High-speed Well Pump

LARGEFLOW
FLOW INCREASE BY 100%

HIGHLIFT
6,000RPM, LIFT RAISE 50%

SMALLSIZE
ONLY 79CM IN HEIGHT

PRODUCT DESCRIPTION

The 100GA permanent magnet high-speed submersible electric well pump has a high motor speed and a multi-stage impeller structure, and with such characteristics as small size, light weight, and high lift, it is widely used in farm-land irrigation and drainage, sprinkler irrigation in gardens, underground water lifting, water delivery for water towers, urban construction, industrial and mining enterprises, and other occasions.

SERVICE CONDITIONS

- The electric pump can work continuously and normally under the following conditions:
 - The medium temperature is not higher than +40°C
 - The pH value of medium is 6.5~8.5
 - The mass ratio of solid impurities contained is not greater than 0.01%, and the particle size is not greater than 0.2mm
 - Three-phase AC 380V, the allowable voltage fluctuation range of the frequency converter is 350V~420V
 - The immersion depth in the water is 5~70m

Small and Exquisite Love It at First Sight Easy to descend to the Well

SHIMGE high-speed well pump is as light as 17kg in weight, and as low as 79cm in height, only half of traditional 4-inch pump in size! Such a light-weight body means that the time-consuming and high-cost way of accessing to the well will be changed completely, and with SHIMGE high-speed well pump, it will never be "painstaking and laborious" to access to the well.



70%
Volume optimization
of SHIMGE high-speed
well pump

63%
Weight Optimization
SHIMGE high-speed
well pump

MAIN TECHNICAL PARAMETERS

Model	Rated flow (m³/h)	Max flow (m³/h)	Rated lift (m)	Max lift (m)	Rated power motor (kW)	Rated speed (r/min)	Rated voltage (V)	Rated current (A)	DN1 (in)	Inner piping (mm)	Head Range (m)	Dimensions (mm)
100GA3-129/8-2.2	3	6.5	129	238	2.2	6000	380	6.5		38mm	222~100	Ø103×823
100GA3-155/10-3			155	294	3			8			242~114	Ø103×891
100GA3-230/13-4			230	376	4			11.6			342~166	Ø103×1005
100GA8-62/4-2.2	8	13	62	125	2.2			6.5	G1 ½	51mm (G1)	120~35	Ø103×713
100GA8-80/5-3			80	165	3			8			147~50	Ø103×754
100GA8-132/7-4			132	230	4			11.6			208~83	Ø103×844
100GA8-169/9-5.5			169	297	5.5			15.5			291~104	Ø103×933
100GA8-250/11-7.5			250	365	7.5			21			353~169	Ø106×1023
100GA8-280/14-11			280	455	11			23.5			421~185	Ø106×1190
100GA15-37/2-2.2	15	24	37	59	2.2			6.5	G2	64mm (G2)	57~21	Ø104×665
100GA15-43/3-3			43	90	3			8			85~25	Ø104×713
100GA15-72/4-4			72	120	4			11.6			113~40	Ø104×778
100GA15-91/6-5.5			91	186	5.5			15.5			176~47	Ø104×881
100GA15-125/8-7.5			125	250	7.5			21			234~65	Ø107×984
100GA15-148/10-11			148	315	11			23.5			301~73	Ø107×1105
100GA22-23/2-2.2	22	30	23	58	2.2			6.5	G3	76mm (G2)	57~5	Ø104×744
100GA22-52/3-4			52	89	4			11.6			87~25	Ø104×852
100GA22-67/4-5.5			67	118	5.5			15.5			116~37	Ø104×950
100GA22-98/5-7.5			98	150	7.5			21			147~65	Ø107×1048
100GA22-108/7-11			108	210	11			23.5			202~70	Ø107×1235
100GA32-16/1-2.2			16	26	2.2			6.5			24~11	Ø105×654
100GA32-34/2-4			34	54	4			11.6			49~24	Ø105×803
100GA32-51/3-5.5			51	81	5.5			15.5			80~35	Ø105×917
100GA32-70/4-7.5			70	110	7.5			21			106~45	Ø108×1030
100GA32-80/5-11			80	136	11			23.5			126~52	Ø108×1162

LARGEFLOW
FLOW INCREASE BY 100%

HIGHLIFT
6,000 RPM, LIFT RAISE 50%

SMALL SIZE
ONLY 79CM IN HEIGHT

EXTERNAL FREQUENCY CONVERTER
Straightforward button control can help the user to handle all kinds of things with ease.



Phase lack protection



Water shortage protection



Automatic control



Blocking protection

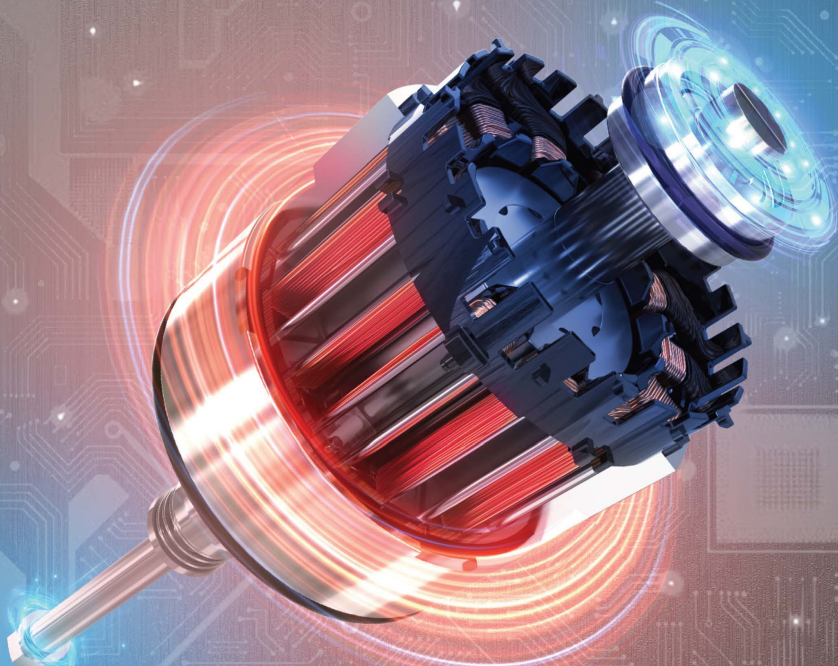


Undervoltage protection



Superior performance

- Equipped with permanent magnet variable-frequency high-efficiency motor
- Speed up to 6000 rpm
- Large flow and high lift
- The performance surpasses well pumps of the same level



Energy saving
and high efficiency

- Variable-frequency and constant-pressure function Guarantee constant-pressure water
- supply for users or companies Significant energy saving effect

